

Kalmar DRT450
Lifting data

	DRT450
Lifting capacity at load centre L4, rated – at max. lifting height (kg)	45000 - 45000
Lifting capacity at load centre L5, rated – at max. lifting height (kg)	31000 - 31000
Lifting speed L4, unloaded – at 70% of rated load (m/s)	0,42 - 0,25
Lowering speed L4, unloaded – at rated load (m/s)	0,36 - 0,36

Driving data

Travelling speed forward, unloaded – at rated load (km/h)	25 - 21
Travelling speed backward, unloaded – at rated load (km/h)	25 - 21
Gradeability at 2 km/h, unloaded – at rated load (%)	34 - 20
Gradeability max., unloaded – at rated load (%)	39 - 32
Drawbar pull, max. (kN)	362

Weight of trucks

Service weight (kg)	69500
Axle load front at load centre L4, unloaded – at rated load (kg)	34700 - 99900
Axle load front at load centre L5, unloaded – at rated load (kg)	38900 - 93000
Axle load front at driving position according to EN 1459, and rated load (kg)	88500
Axle load rear at load centre L4, unloaded – at rated load (kg)	34800 - 14600
Axle load rear at load centre L5, unloaded – at rated load (kg)	30600 - 7500
Axle load rear at driving position according to EN 1459, and rated load (kg)	26000

Engine

Manufacturer / model	Volvo / TAD-1350-VE
Fuel / type of engine	Diesel / 4 stroke
Emission stage / approval	EU Stage III / EPA Tier 3
Number of cylinders - engine volume (dm ³)	6-inline / 12,8
Power nominal / max, according to ISO-3046 – at revs (kW / rpm)	256 / 1400-1900
Torque max, according to ISO-3046 – at revs (Nm / rpm)	1780 / 1000-1400
Alternator, type - power (W)	AC - 4200
Starting battery, voltage - capacity (V – Ah)	2×12 - 135-145
Fuel consumption, normal driving (l/h)	16-20

Transmission

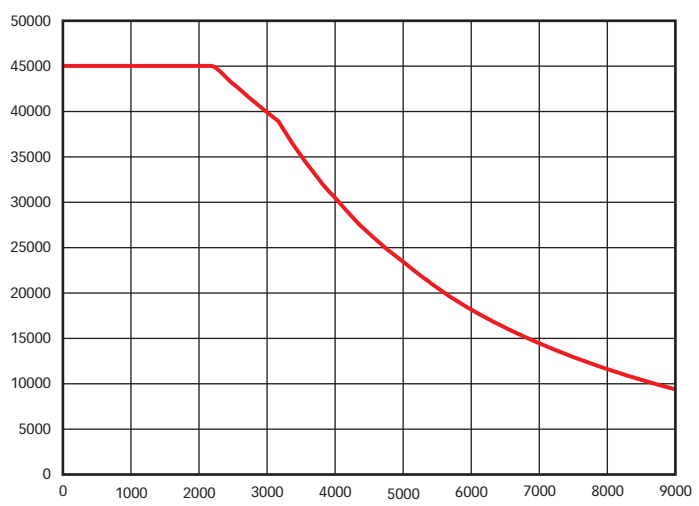
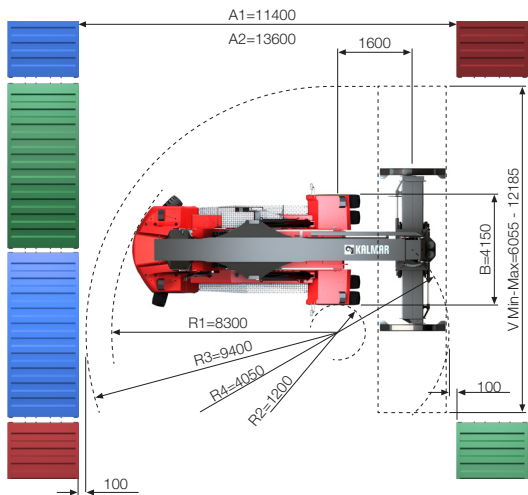
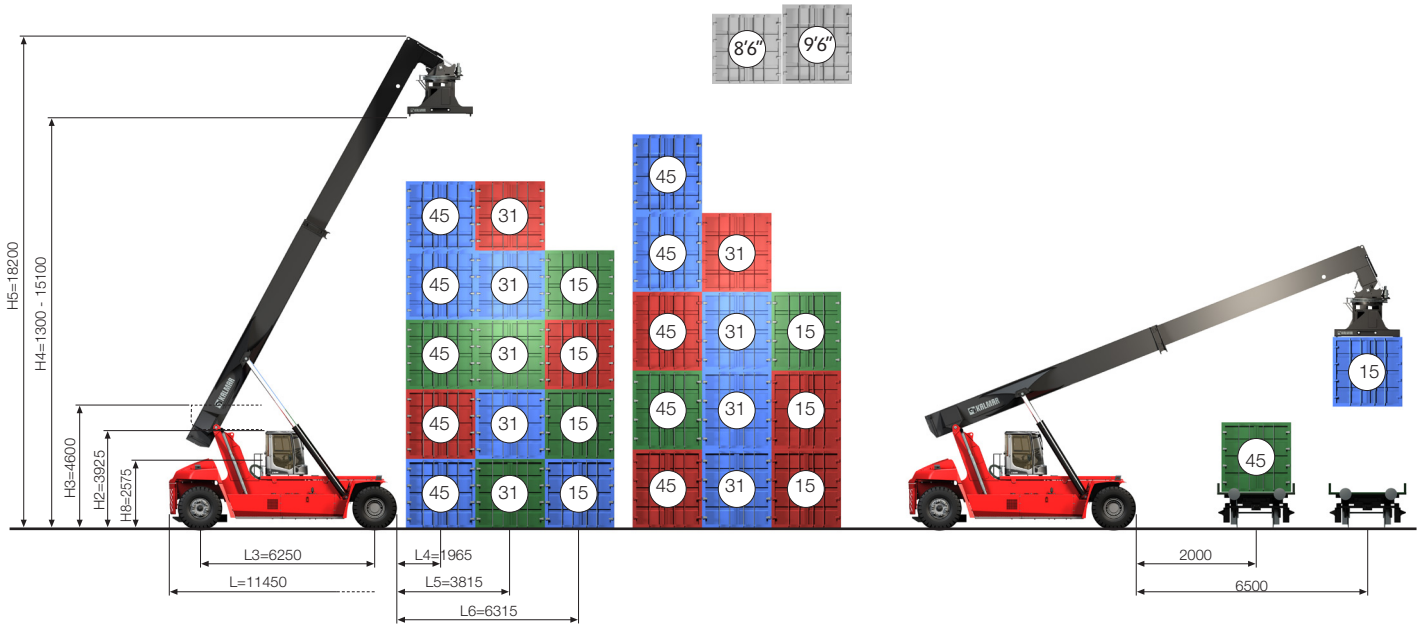
Manufacturer / model	Dana / 15,7 TE32418
Clutch, type	Torque converter
Gearbox, type	Automatic Powershift
Number of gears, forward - reverse	4 - 4
Driving axle, manufacturer / type	Kessler D102 / Differential and hub reduction

Wheels

Tyre, type	Pneumatic / Tubeless
Dimensions, front – rear (inch)	18.00x25 – 18.00x25, PR40 E4
Rim dimension, front – rear (inch)	13.00x25 / 2.5
Number of wheels, front – rear (*driven)	4* - 2
Pressure (MPa)	1,0

Miscellaneous

Steering system, type – maneuvering	Service assisted - Steering wheel
Service brake system, type – affected wheels	Wet disc brakes - Drive wheel
Parking brake system, type – affected wheels	Spring brake - Drive wheel
Noise level EN12053 with ECO modes - equivalent inside cabin LpAZ (dB(A))	72
Noise level EN12053 with ECO-modes - equivalent outside cabin LwAZ (dB(A))	110
Max. hydraulic pressure (MPa) boom / spreader	20,0
Fuel volume (l)	550
Hydraulic oil volume (l)	740 (600 + 140)
Overload protection	Electronic



Dimensions

		DRT450
Boom angle (°)	α	0 - 60
Attachment rotation, CW – CCW (°)	β	195 - 105
Sideshift \pm (mm)	V1	± 800
Track (c-c), front – rear	S	3030 - 2600
Ground clearance, min. (mm)		250

The designs and materials specification are subject to alternation without prior notice.
Tolerances according to K-standard 95430.0008/0009.

Kalmar offers the widest range of cargo handling solutions and services to ports, terminals, distribution centres and to heavy industry. Kalmar is the industry forerunner in terminal automation and in energy efficient container handling, with one in four container movements around the globe being handled by a Kalmar solution. Through its extensive product portfolio, global service network and ability to enable a seamless integration of different terminal processes, Kalmar improves the efficiency of every move. www.kalmarglobal.com

Kalmar is part of Cargotec. Cargotec's sales in 2018 totalled approximately EUR 3.3 billion and it employs around 12,000 people. www.cargotec.com



Cargotec Sweden AB
Movägen 1
SE-341 32, Ljungby, Sweden
tel. +46 372 260 00
www.kalmarglobal.com